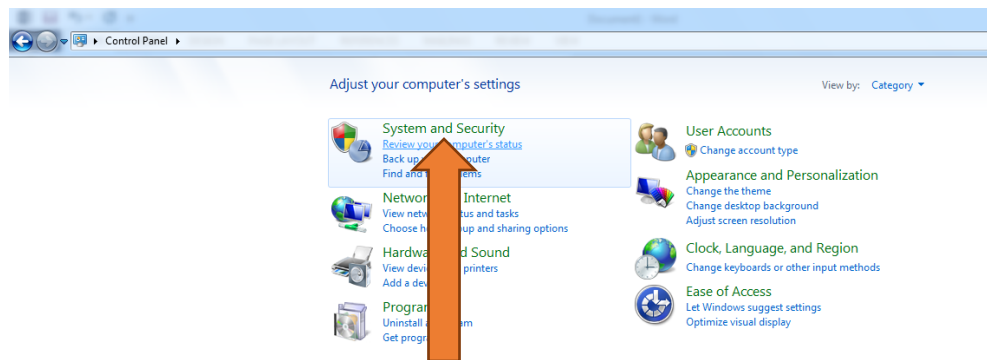


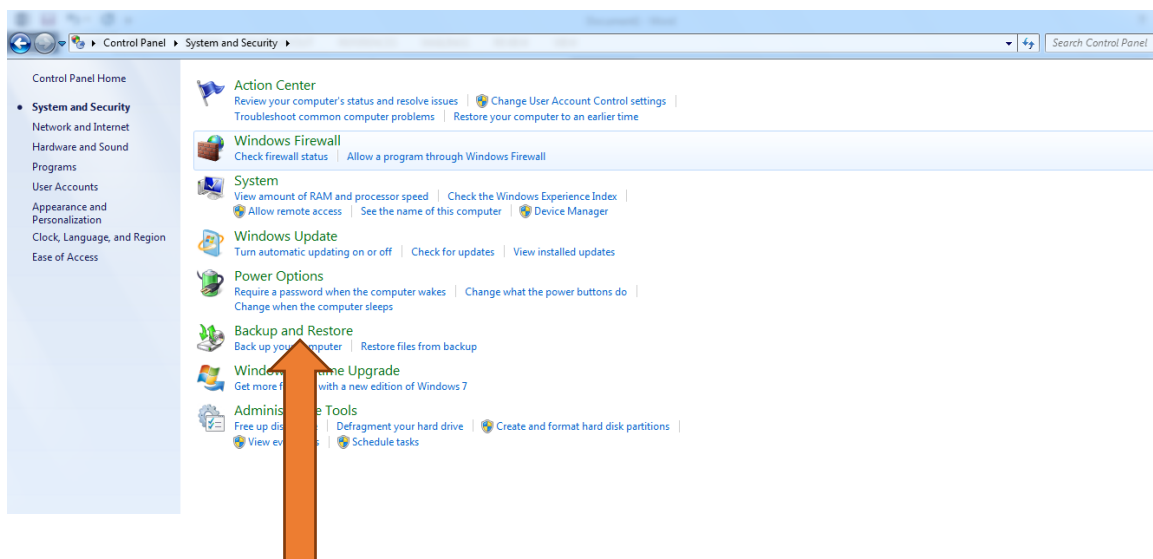
# BACKUP on a Network Disk

Please follow the following instructions to take the backup of your system on a Network Disk

## 1. Go to **Control Panel**

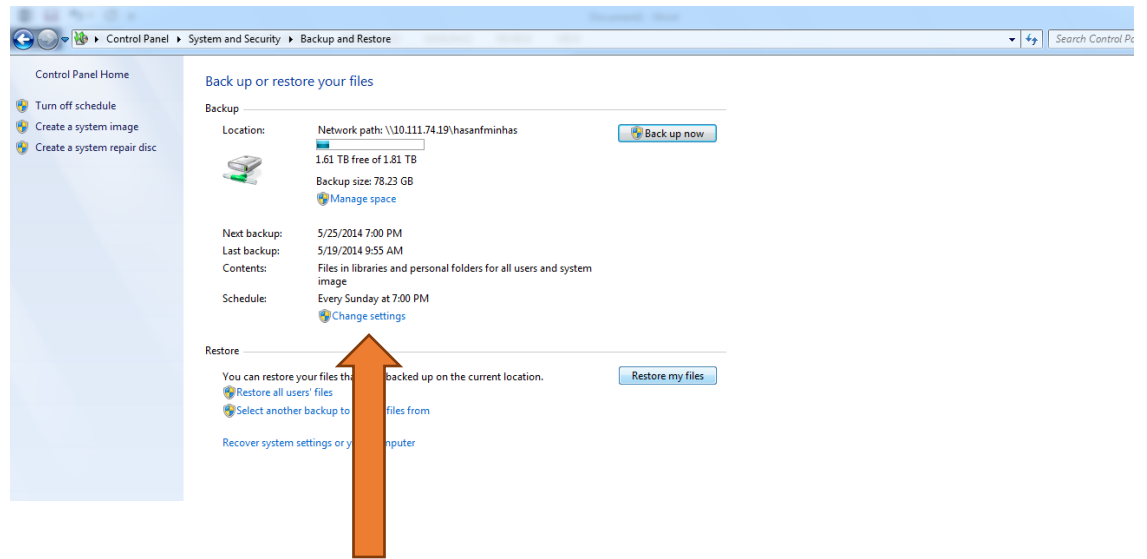


## 2. Go to **System and Security**

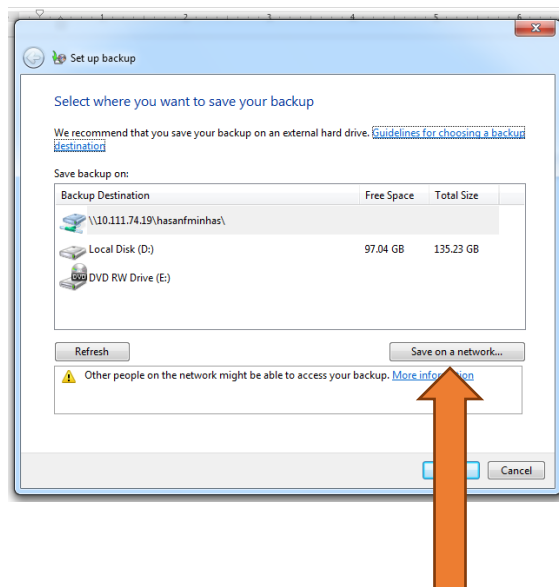


## 3. Click on **Backup and Restore**

4. Click on **Change Settings**

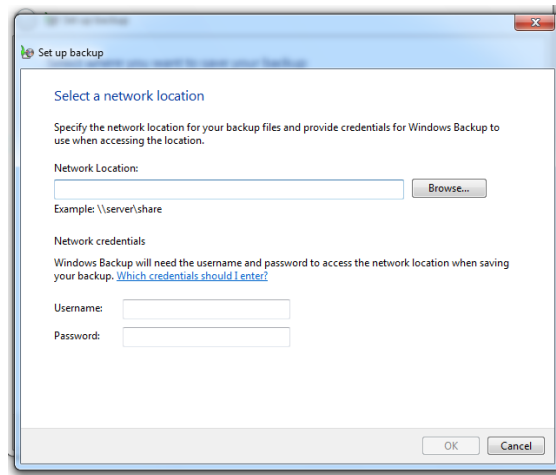


5. A window will appear with a name "set up backup"



6. Click on **Save on a Network**

- Another window will appear in front of you demanding your Network Location, Username and Password.



- Enter your **Network Location** (e.g. [\\10.111.74.19\hasanfminhas\](#))
- Enter your **Username** and **Password** and click **OK**.
- Now you have selected the location. Click on **Back up now** option to start the process.

